

[Rod's Woodworking Corner](#)

Introduction

Build these two saw table extensions that will allow you to rip those 4 x 8 panels on your small table saw; materials required:

- 1 x 4 x 8' - (7)
- 2 x 4 x 8' - (2)
- Bolts with washers and thumb screws: 3/16 x 2 1/2" - (8)
- 40 Wood Screws or Drywall screws; 2"
- One, 4' Straight Edge, Adjustable Clamp

Step One, Cut the Frame pieces



Select one 1 x 4 x 8'; measure and cut four pieces @ 22" (these will become the ends of the Table Extensions).

Select one 2 x 4 x 8'; measure and cut four pieces @ 22" (these will become the cross pieces of the Table Extensions).

Select one 1 x 4 x 8'; measure and cut four pieces @ 23 1/2" (these will become the cross piece supports).

Select another 2 x 4 x 8'; measure the distance from the top surface edge of your table saw to the floor; transfer this measurement to the 2 x 4 and cut two pieces of equal length (these will become the two support legs of the two Table Extensions).

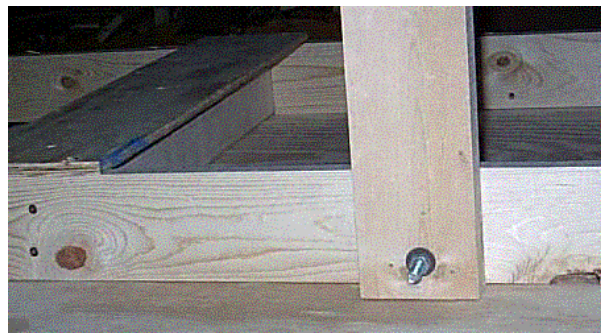
Step Two, Assemble the Table Extension



Select two 1 x 4 x 8' and lay them on edge on a flat service/floor; select two pieces of the 1 x 4 x 22" and lay them on edge, one at each end, and screw them together (use a speed square to ensure all angles are square).

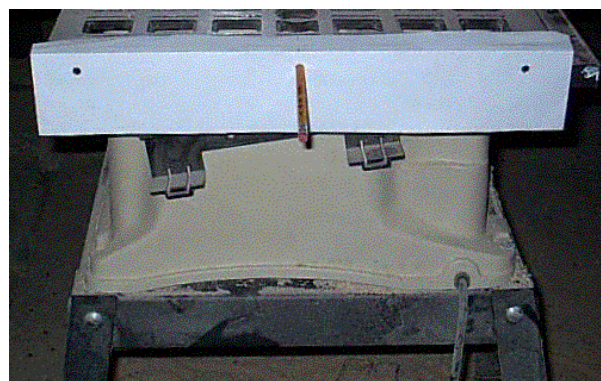
Select two 2 x 4 x 22" cross pieces and lay them on edge, equal distance from each end and screw them in place.

Select two, 1 x 4 x 23 1/2" cross piece supports and center them across the 2 x 4 Cross Pieces; screw them in place into the 2 x 4's and the edges of the Table Extension.



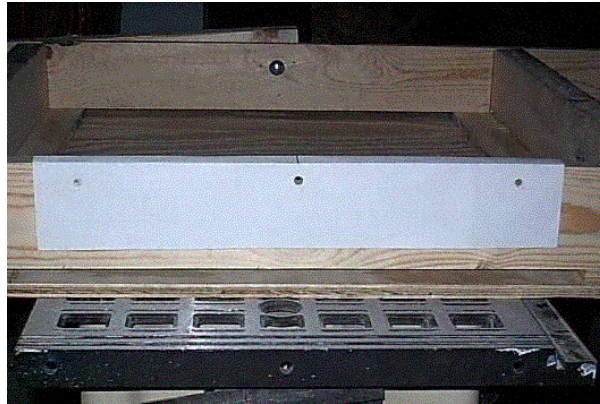
Select one, 2 x 4 Support Leg; center it perpendicular on the outside edge of the extension; drill a 3/16" hole and connect the leg to the extension with a screw and wing nut (allow it to remain loose so it may be moved out of the way in the next step).

Flip the Table Extension over.



Take a piece of plain paper to use as a template and fold it so that the paper will fit over all three holes on the side of your table saw (fold the paper so that the "L" shape dimension is: 1/2" x 3"); hang the paper over the edge of the table covering the three holes on the side of the table top; measure and mark the center of the Center Hole on the 1/2" lip of the paper; mark all

three holes as shown above.



On the top edge of the Table Extension that will touch the saw table top, mark the center of the Table Extension; line up the center of the paper template to the center of the Table Extension; using the marks on the template, drill the three holes @ 3/16".

One Table Extension is complete, Repeat this step to complete the matching Extension.



After completing the second Extension, lift them up into position; tighten the Support Leg into position; attach the Table Extension to the saw with the 3/16" bolts, washers, and wing nuts.

Clamp the adjustable Straight Edge Clamp to the desired position to the 2 x 4 Cross Pieces; this will be a fence for ripping your over-sized sheet goods on your little contractor-type table saw.